



# WELCOME TO THE DEVELOPER SPECIFICATION GUIDE

CONFIDENCE THROUGH  
EXPERIENCE!



Welcome to the new Reginox specification guide, which sets out to equip housebuilders, architects, interior designers and specifiers with all the knowledge required to make the perfect sink and tap choice for any kitchen, regardless of design or style.

So why specify Reginox? It goes without saying we have one of the most comprehensive ranges of sinks, taps and accessories available in the UK; we have built a reputation for outstanding customer service and our attention to detail results in proven quality products. But, perhaps more importantly, it's all about confidence through experience!

## EXPERIENCE

We have been manufacturing sinks in our own state of the art factory in Holland for over 40 years, constantly pushing the boundaries of manufacturing processes and techniques, improving the quality of our products. We export across the world which shows our manufacturing and industry experience is second to none. You can be confident that you would be specifying a product and brand that knows both your needs and your customers' needs but most importantly products that will not let you down.



## THE DEVELOPERS' CHOICE

Reginox entered the UK sink market through a standalone subsidiary back in 2000 and since then we have been involved in the developer sector achieving product specification throughout the whole of the UK. We have continuously worked with some of the most recognised and most prestigious house-builder brands in the market so whether you need a product for the high-volume, entry level sector or the highest bespoke city centre penthouse apartments, Reginox can be specified for whatever suits your needs. With so many specifications over so many years you can be confident when you choose Reginox, you are in good company.

## THE FITTERS' CHOICE

One of the things we understand is that, before any property is sold, components have to be handled by fitters. Reginox has developed a range of sinks that come complete with high quality waste and fitting packs to make life easier for kitchen fitters and plumbing contractors to work with. We use high quality packaging to ensure that the risk of damage on site prior to fitting is minimised, our instructions are clear and easy to use and most importantly the overall quality of the product itself is of the highest possible standard.

## FIT & FORGET

Our experience of your market means that Reginox fully understands the hassle and complications of post-sale snagging so we have strived to put together the best possible complete package. The last thing you need is expensive and time-consuming call outs to problematic products.

We work to a simple philosophy: **Fit and forget. No issues. No snagging.**

## UK CUSTOMER NETWORK

With over 15 years' experience within this sector we have established and built up the most impressive network of routes to market. We have trading partnerships with some of the most recognisable kitchen manufacturers across the whole of the UK and Ireland, both national and regional, along with some of the UK's most recognisable plumber's merchants and other national outlets. This means that when you specify Reginox you can be absolutely sure that your preferred purchasing route can be accommodated.

## REBATES

Reginox is happy to work with you to create a 'direct to developer' rebate scheme. This is usually based on a volume driven scale and can be discussed directly with your local Reginox Sales Manager. We can have the rebate tailor made to fit your requirements, further supporting building partnerships through experience.

## SUPPORT

Our Area Sales Managers have a wealth of experience and industry knowledge, not just in the developer market, but also of the UK kitchen sink market too. Our Cheshire-based UK sales and logistics hub also has a team of dedicated people, many of whom have been with the business for many years and are a hive of knowledge.

## COMPLETE. ON TIME. EVERYTIME!

We typically carry over £500k worth of stock in the UK (with back up stocks in Holland) meaning we can easily facilitate your specifications. With our delivery schedule being "from us to you" within 24 hours\* it means you can be confident that you will have the products on site COMPLETE, ON TIME, EVERYTIME. \*subject to terms and conditions

In essence, you can be sure that specifying and working with Reginox as your preferred sink and tap partner will instill confidence that you are working with the best. Our powerful combination of quality, value, partnership and trust has all been developed through many years of experience.

**CONFIDENCE THROUGH EXPERIENCE - IT'S WHAT WE DO!**





# Product Range Overview

Can't find what you're looking for? Please contact Reginox UK on 01260 280033 or visit [www.reginox.co.uk](http://www.reginox.co.uk) for additional products and information.

## Inset Sinks

**R18390OKG**  
page 7



**BOSTON-R**  
page 7



**DAYTONA**  
page 8



**LEMANS 1.5**  
page 8



**BETA10**  
page 9



**DIPLOMAT 10 ECO**  
page 10



**DIPLOMAT 15 ECO**  
page 10



**REGIDRAIN-R**  
page 11



**ADMIRAL R40**  
page 11



**GALICIA**  
page 12



**MINISTER 10**  
page 12



**REGENT 10**  
page 14



**REGENT 30**  
page 14



**CENTURIO R10**  
page 15



**CENTURIO R1.5**  
page 15



## Integrated Sinks

**L183016OKG**  
page 17



**L183440OKG**  
page 17



**L18390OKG**  
page 18



**L184035OKG**  
page 18



**COLORADO COMFORT**  
page 19



**NEBRASKA**  
page 20



**ALASKA**  
page 21



**NEW YORK 18X40**  
page 22



**NEW YORK 40X40**  
page 22



**NEW YORK 50X40**  
page 23



**OHIO 18X40**  
page 24



**OHIO 40X40**  
page 24



**OHIO 50X40 TAPWING**  
page 25



**OHIO 18X40+40X40**  
page 25



**TEXAS 18X40**  
page 26



**TEXAS 30X40**  
page 26



**TEXAS 50X40**  
page 27



**TEXAS 18X40+30X40**  
page 27



**CENTURIO L10**  
page 28

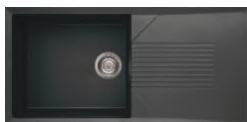


**CENTURIO L1.5**  
page 28



## Granite Sinks

**TEKNO 480**  
page 31



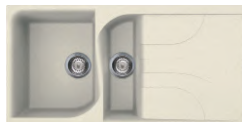
**TEKNO 475**  
page 31



**EGO 480**  
page 32



**EGO 475**  
page 32



**BEST 480**  
page 33



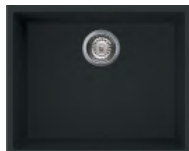
**BEST 475**  
page 33



**QUADRA 50**  
page 34



**QUADRA 105**  
page 34



**QUADRA 130**  
page 35



## Ceramic Sinks

**RL301CW**  
page 37



**RL304CW**  
page 37



**RL501CW**  
page 38



**RL504CW**  
page 38



**BELFAST**  
page 39



**MATARO**  
page 40



**TUSCANY**  
page 40



**CERAMIC DRAINER**  
page 41



## Taps

**MIAMI**  
page 43



**ZAMBESI**  
page 43



**ASTORIA**  
page 43



**ASTORIA BRUSHED**  
page 43



**AMUR**  
page 44



**AMUR BRUSHED**  
page 44



**HUDSON**  
page 44



**HUDSON BRUSHED**  
page 44



**MURRAY**  
page 45



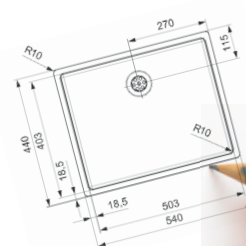
**MAGDALENA**  
page 45



**CAMAYA**  
page 45



**AMANZI**  
page 45





## Inset sink collection

The Reginox inset sink collection is a comprehensive range of 'traditional fit' stainless steel sinks, with designs covering all styles and bowl configurations, this collection is the ideal fit for the developer sector. Using the standard fitting system of 'cut, drop, fix' into worktops, this range is an easy and efficient way of installing sinks. All Reginox inset sinks are provided with a well designed, effective and practical clip fixing system. Once fitted these sinks look stylish and combine practicality and functionality.

This range also provides clear options for both kitchens and utility rooms. Accessories are available for most Inset sinks to provide upgrade opportunities for the developer, helping enhance revenues at the same time as creating more aesthetic appearance.



- **Contract**

Page 7

- **Compact Sinks**

Page 11

- **Mid Range Sinks**

Page 12

- **Regent**

Page 14

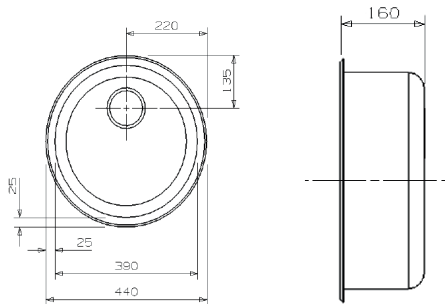
- **Centurio**

Page 15

# Inset sink collection

## CONTRACT SINKS

R18390OKG

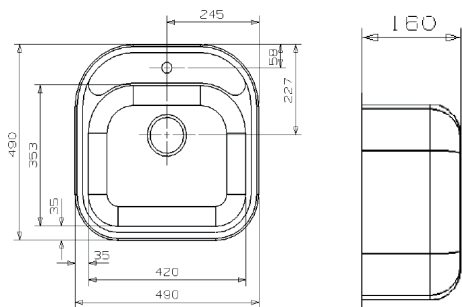


### Features

|                         |                       |
|-------------------------|-----------------------|
| Material                | 18/10 Stainless Steel |
| Finish                  | Polished Inox         |
| Cabinet Size (mm)       | 450                   |
| Bowl Dimension (mm)     | Ø 390                 |
| 2nd Bowl Dimension (mm) | N/A                   |
| Bowl Depth (mm)         | 160                   |
| Gauge Steel             | 0.7                   |
| Fitting                 | Inset                 |
| Waste Included          | Yes                   |

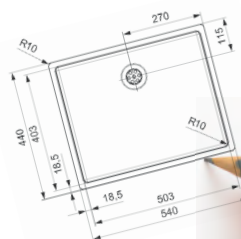


## BOSTON-R



### Features

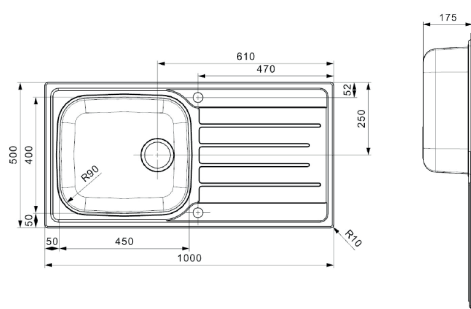
|                         |                       |
|-------------------------|-----------------------|
| Material                | 18/10 Stainless Steel |
| Finish                  | Polished Inox         |
| Cabinet Size (mm)       | 500                   |
| Bowl Dimension (mm)     | 420 x 353             |
| 2nd Bowl Dimension (mm) | N/A                   |
| Bowl Depth (mm)         | 160                   |
| Gauge Steel             | 0.7                   |
| Fitting                 | Inset                 |
| Waste Included          | Yes                   |





# CONTRACT SINKS

## DAYTONA

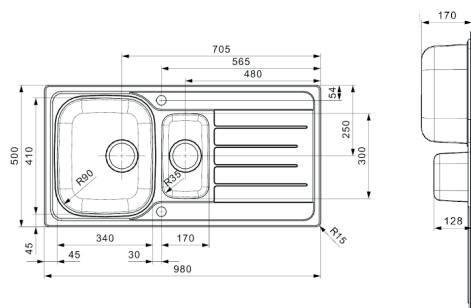


### Features

|                                |                       |
|--------------------------------|-----------------------|
| <b>Material</b>                | 18/10 Stainless Steel |
| <b>Finish</b>                  | Unpolished            |
| <b>Cabinet Size (mm)</b>       | 600                   |
| <b>Bowl Dimension (mm)</b>     | 450 x 400             |
| <b>2nd Bowl Dimension (mm)</b> | N/A                   |
| <b>Bowl Depth (mm)</b>         | 175                   |
| <b>Gauge Steel</b>             | 0.6                   |
| <b>Fitting</b>                 | Inset                 |
| <b>Waste Included</b>          | Yes                   |



## LEMANS1.5



### Features

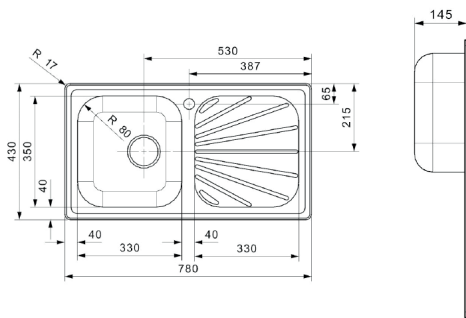
|                                |                       |
|--------------------------------|-----------------------|
| <b>Material</b>                | 18/10 Stainless Steel |
| <b>Finish</b>                  | Unpolished            |
| <b>Cabinet Size (mm)</b>       | 600                   |
| <b>Bowl Dimension (mm)</b>     | 340 x 410             |
| <b>2nd Bowl Dimension (mm)</b> | 170 x 300             |
| <b>Bowl Depth (mm)</b>         | 170 / 128             |
| <b>Gauge Steel</b>             | 0.6                   |
| <b>Fitting</b>                 | Inset                 |
| <b>Waste Included</b>          | Yes                   |





# CONTRACT SINKS

## BETA10



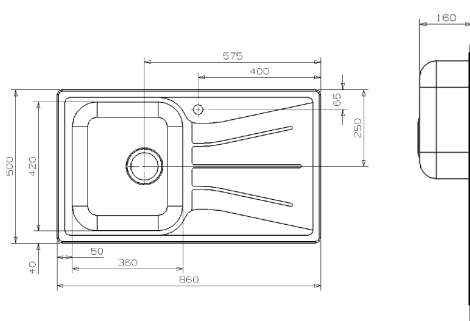
### Features

|                         |                       |
|-------------------------|-----------------------|
| Material                | 18/10 Stainless Steel |
| Finish                  | Matt Inox             |
| Cabinet Size (mm)       | 450                   |
| Bowl Dimension (mm)     | 330 x 350             |
| 2nd Bowl Dimension (mm) | N/A                   |
| Bowl Depth (mm)         | 145                   |
| Gauge Steel             | 0.6                   |
| Fitting                 | Inset                 |
| Waste Included          | Yes                   |



# CONTRACT SINKS

## DIPLOMAT 10 ECO

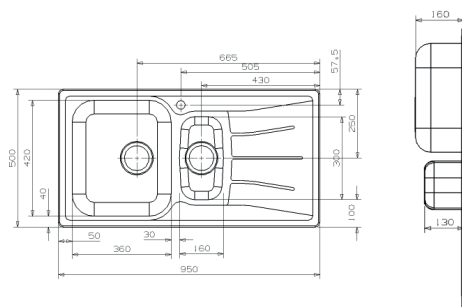
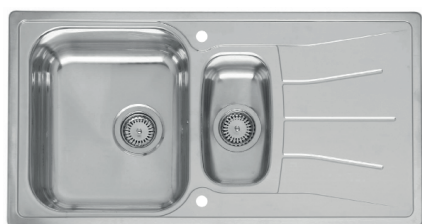


### Features

|                         |                       |
|-------------------------|-----------------------|
| Material                | 18/10 Stainless Steel |
| Finish                  | Polished Inox         |
| Cabinet Size (mm)       | 500                   |
| Bowl Dimension (mm)     | 360 x 420             |
| 2nd Bowl Dimension (mm) | N/A                   |
| Bowl Depth (mm)         | 160                   |
| Gauge Steel             | 0.6                   |
| Fitting                 | Inset                 |
| Waste Included          | Yes                   |



## DIPLOMAT 15 ECO



### Features

|                         |                       |
|-------------------------|-----------------------|
| Material                | 18/10 Stainless Steel |
| Finish                  | Polished Inox         |
| Cabinet Size (mm)       | 600                   |
| Bowl Dimension (mm)     | 360 x 420             |
| 2nd Bowl Dimension (mm) | 160 x 300             |
| Bowl Depth (mm)         | 160 / 130             |
| Gauge Steel             | 0.6                   |
| Fitting                 | Inset                 |
| Waste Included          | Yes                   |

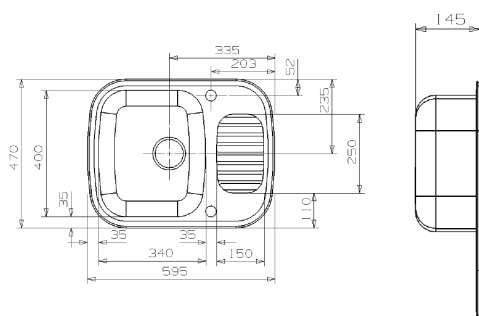


# COMPACT SINKS

## REGIDRAIN-R



\*\* Available with / without tap holes



### Features

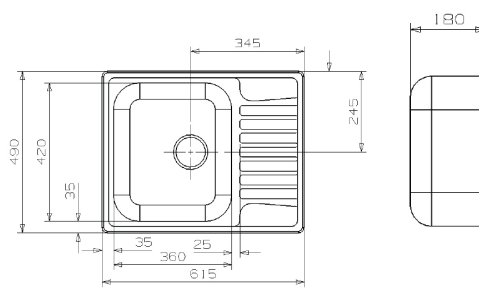
|                         |                       |
|-------------------------|-----------------------|
| Material                | 18/10 Stainless Steel |
| Finish                  | Polished Inox         |
| Cabinet Size (mm)       | 450                   |
| Bowl Dimension (mm)     | 340 x 400             |
| 2nd Bowl Dimension (mm) | N/A                   |
| Bowl Depth (mm)         | 145                   |
| Gauge Steel             | 0.7                   |
| Fitting                 | Inset                 |
| Waste Included          | Yes                   |



## ADMIRAL R40

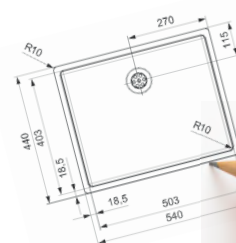


\*\* Undrilled unless requested



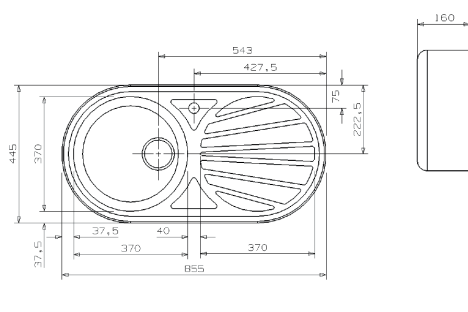
### Features

|                         |                       |
|-------------------------|-----------------------|
| Material                | 18/10 Stainless Steel |
| Finish                  | Polished Inox         |
| Cabinet Size (mm)       | 500                   |
| Bowl Dimension (mm)     | 360 x 420             |
| 2nd Bowl Dimension (mm) | N/A                   |
| Bowl Depth (mm)         | 180                   |
| Gauge Steel             | 0.9                   |
| Fitting                 | Inset                 |
| Waste Included          | Yes                   |



# MID RANGE SINKS

## GALICIA

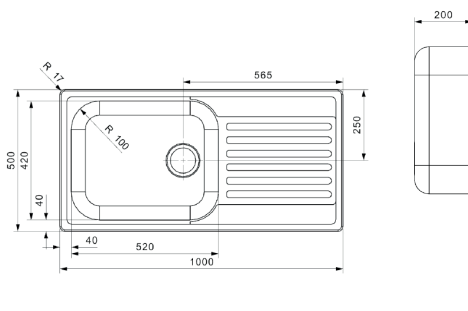


### Features

|                         |                       |
|-------------------------|-----------------------|
| Material                | 18/10 Stainless Steel |
| Finish                  | Polished Inox         |
| Cabinet Size (mm)       | 450                   |
| Bowl Dimension (mm)     | Ø 370                 |
| 2nd Bowl Dimension (mm) | N/A                   |
| Bowl Depth (mm)         | 160                   |
| Gauge Steel             | 0.6                   |
| Fitting                 | Inset                 |
| Waste Included          | Yes                   |



## MINISTER 10



### Features

|                         |                       |
|-------------------------|-----------------------|
| Material                | 18/10 Stainless Steel |
| Finish                  | Polished Inox         |
| Cabinet Size (mm)       | 600                   |
| Bowl Dimension (mm)     | 520 x 420             |
| 2nd Bowl Dimension (mm) | N/A                   |
| Bowl Depth (mm)         | 200                   |
| Gauge Steel             | 0.8                   |
| Fitting                 | Inset                 |
| Waste Included          | Yes                   |





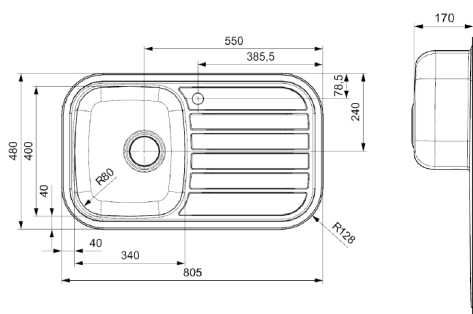


# REGENT SERIES

## REGENT 10



\*\* Also available as main bowl right



### Features

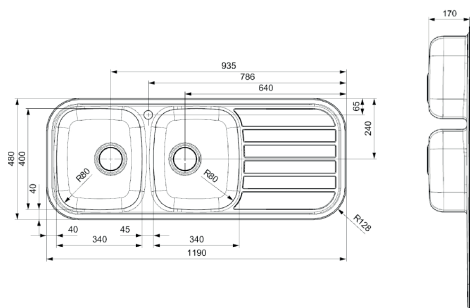
|                                |                       |
|--------------------------------|-----------------------|
| <b>Material</b>                | 18/10 Stainless Steel |
| <b>Finish</b>                  | Polished Inox         |
| <b>Cabinet Size (mm)</b>       | 450                   |
| <b>Bowl Dimension (mm)</b>     | 340 x 400             |
| <b>2nd Bowl Dimension (mm)</b> | N/A                   |
| <b>Bowl Depth (mm)</b>         | 170                   |
| <b>Gauge Steel</b>             | 0.7                   |
| <b>Fitting</b>                 | Inset                 |
| <b>Waste Included</b>          | Yes                   |



## REGENT 30



\*\* Also available as main bowl right



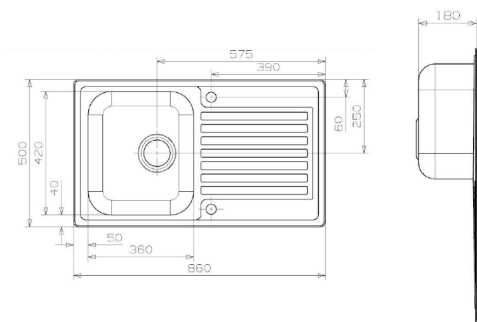
### Features

|                                |                       |
|--------------------------------|-----------------------|
| <b>Material</b>                | 18/10 Stainless Steel |
| <b>Finish</b>                  | Polished Inox         |
| <b>Cabinet Size (mm)</b>       | 800                   |
| <b>Bowl Dimension (mm)</b>     | 340 x 400             |
| <b>2nd Bowl Dimension (mm)</b> | 340 x 400             |
| <b>Bowl Depth (mm)</b>         | 170 / 170             |
| <b>Gauge Steel</b>             | 0.7                   |
| <b>Fitting</b>                 | Inset                 |
| <b>Waste Included</b>          | Yes                   |



# CENTURIO SERIES

## CENTURIO R10

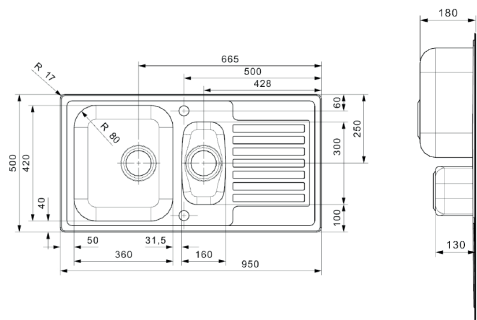


### Features

|                         |                       |
|-------------------------|-----------------------|
| Material                | 18/10 Stainless Steel |
| Finish                  | Polished Inox         |
| Cabinet Size (mm)       | 500                   |
| Bowl Dimension (mm)     | 360 x 420             |
| 2nd Bowl Dimension (mm) | N/A                   |
| Bowl Depth (mm)         | 180                   |
| Gauge Steel             | 0.9                   |
| Fitting                 | Inset                 |
| Waste Included          | Yes                   |

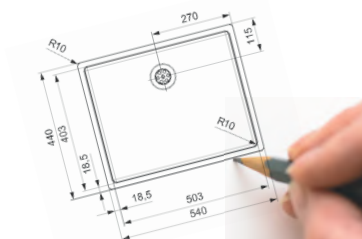


## CENTURIO R1.5



### Features

|                         |                       |
|-------------------------|-----------------------|
| Material                | 18/10 Stainless Steel |
| Finish                  | Polished Inox         |
| Cabinet Size (mm)       | 600                   |
| Bowl Dimension (mm)     | 360 x 420             |
| 2nd Bowl Dimension (mm) | 160 x 300             |
| Bowl Depth (mm)         | 180 / 130             |
| Gauge Steel             | 0.9                   |
| Fitting                 | Inset                 |
| Waste Included          | Yes                   |





# Integrated sink collection



The well renowned Reginox Integrated collection is one of the most comprehensive available in the current market. With an abundance of designs, shapes and bowl configurations, combined with our amazing MULTI-FIT SYSTEM the integrated sink range from Reginox is a developers dream. This range comes with our high quality fixing systems that ensure a quick and efficient fit.

The MULTI-FIT system allows many of these sinks to be flush, integrated, under mounted or even simply inset, creating the most flexible sink fitting opportunities. Traditionally these sinks would be used in solid surface materials such as granite, solid timber or man-made variants where there is little or no potential of water penetration. These looks create stunning results and truly enhance the appearance of any kitchen. The third option to 'inset' means that a virtual flush appearance can also be created in more traditional worktops such as chipboard. The top outer edge of the sink (typically .7-.9 thick) creates a sleek, low profile finish that immediately impresses - the ultimate choice for the developer market.



Underbuild



Semi integrated



Integrated

## • Contract Sinks

Page 17

## • Ohio

Page 24

## • Undermount Only

Page 20

## • Texas

Page 26

## • New York

Page 22

## • Centurio

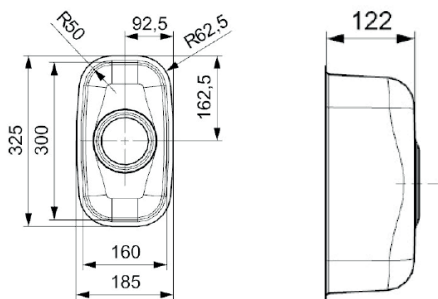
Page 28



# Integrated sink collection

## CONTRACT SINKS

### L183016OKG

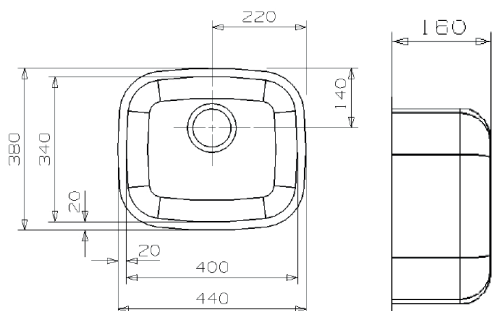


#### Features

|                         |                       |
|-------------------------|-----------------------|
| Material                | 18/10 Stainless Steel |
| Finish                  | Polished Inox         |
| Cabinet Size (mm)       | 400                   |
| Bowl Dimension (mm)     | 160 x 300             |
| 2nd Bowl Dimension (mm) | N/A                   |
| Bowl Depth (mm)         | 122                   |
| Gauge Steel             | 0.8                   |
| Fitting                 | Integrated            |
| Waste Included          | Yes                   |

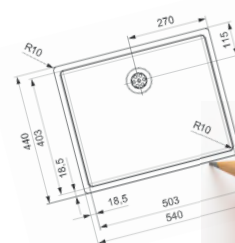


### L183440OKG



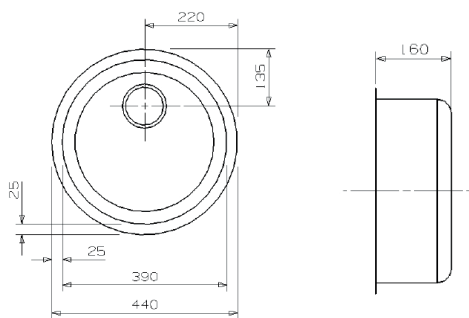
#### Features

|                         |                       |
|-------------------------|-----------------------|
| Material                | 18/10 Stainless Steel |
| Finish                  | Polished Inox         |
| Cabinet Size (mm)       | 450                   |
| Bowl Dimension (mm)     | 400 x 340             |
| 2nd Bowl Dimension (mm) | N/A                   |
| Bowl Depth (mm)         | 160                   |
| Gauge Steel             | 0.8                   |
| Fitting                 | Integrated            |
| Waste Included          | Yes                   |



# CONTRACT SINKS

## L18390OKG

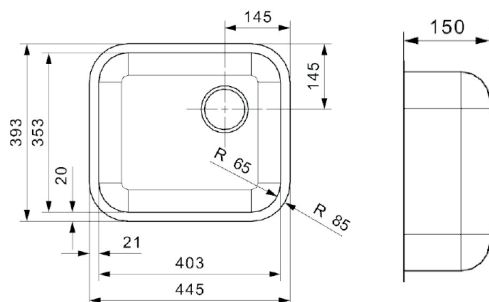


### Features

|                         |                       |
|-------------------------|-----------------------|
| Material                | 18/10 Stainless Steel |
| Finish                  | Polished Inox         |
| Cabinet Size (mm)       | 450                   |
| Bowl Dimension (mm)     | Ø 390                 |
| 2nd Bowl Dimension (mm) | N/A                   |
| Bowl Depth (mm)         | 160                   |
| Gauge Steel             | 0.8                   |
| Fitting                 | Integrated            |
| Waste Included          | Yes                   |



## L184035OKG

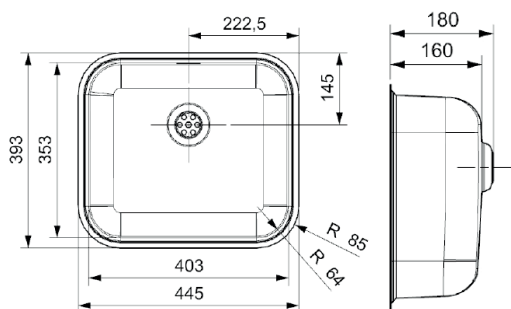


### Features

|                         |                       |
|-------------------------|-----------------------|
| Material                | 18/10 Stainless Steel |
| Finish                  | Polished Inox         |
| Cabinet Size (mm)       | 450                   |
| Bowl Dimension (mm)     | 403 x 353             |
| 2nd Bowl Dimension (mm) | N/A                   |
| Bowl Depth (mm)         | 150                   |
| Gauge Steel             | 0.8                   |
| Fitting                 | Integrated            |
| Waste Included          | Yes                   |



# COLORADO COMFORT



\*Integral Waste

## Features

|                         |                       |
|-------------------------|-----------------------|
| Material                | 18/10 Stainless Steel |
| Finish                  | Polished Inox         |
| Cabinet Size (mm)       | 450                   |
| Bowl Dimension (mm)     | 403 x 353             |
| 2nd Bowl Dimension (mm) | N/A                   |
| Bowl Depth (mm)         | 160                   |
| Gauge Steel             | 0.9                   |
| Fitting                 | Integrated            |
| Waste Included          | Yes                   |



Semi integrated



Underbuild

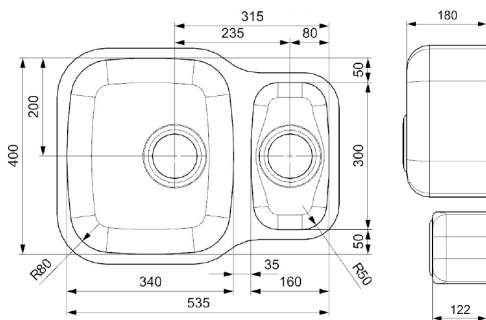


Integrated



# UNDERMOUNT ONLY SINKS

## NEBRASKA



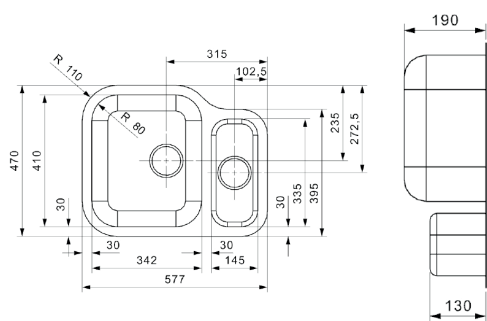
### Features

|                         |                       |
|-------------------------|-----------------------|
| Material                | 18/10 Stainless Steel |
| Finish                  | Polished Inox         |
| Cabinet Size (mm)       | 600                   |
| Bowl Dimension (mm)     | 340 x 400             |
| 2nd Bowl Dimension (mm) | 160 x 300             |
| Bowl Depth (mm)         | 180 / 122             |
| Gauge Steel             | 0.9                   |
| Fitting                 | Undermount Only       |
| Waste Included          | Yes                   |





# ALASKA MBL

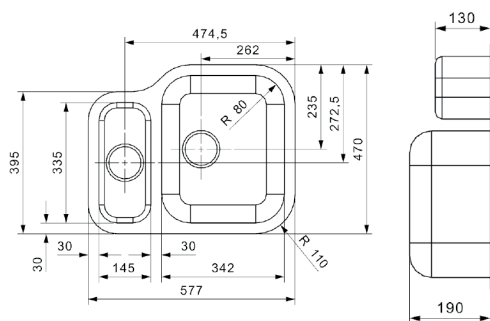


## Features

|                         |                       |
|-------------------------|-----------------------|
| Material                | 18/10 Stainless Steel |
| Finish                  | Polished Inox         |
| Cabinet Size (mm)       | 600                   |
| Bowl Dimension (mm)     | 342 x 410             |
| 2nd Bowl Dimension (mm) | 145 x 335             |
| Bowl Depth (mm)         | 190 / 130             |
| Gauge Steel             | 0.9                   |
| Fitting                 | Undermount Only       |
| Waste Included          | Yes                   |

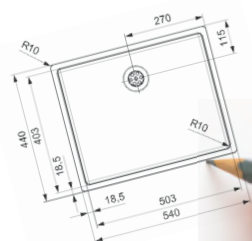


# ALASKA MBR



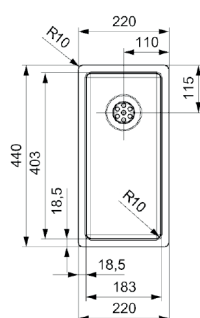
## Features

|                         |                       |
|-------------------------|-----------------------|
| Material                | 18/10 Stainless Steel |
| Finish                  | Polished Inox         |
| Cabinet Size (mm)       | 600                   |
| Bowl Dimension (mm)     | 145 x 335             |
| 2nd Bowl Dimension (mm) | 342 x 410             |
| Bowl Depth (mm)         | 190 / 130             |
| Gauge Steel             | 0.9                   |
| Fitting                 | Undermount Only       |
| Waste Included          | Yes                   |



# NEW YORK COLLECTION

## NEW YORK 18X40



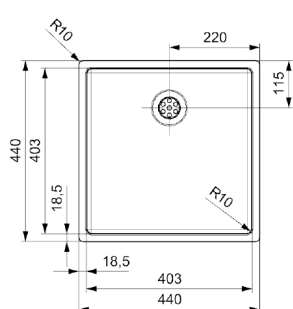
\*Integral Waste

### Features

|                         |                       |
|-------------------------|-----------------------|
| Material                | 18/10 Stainless Steel |
| Finish                  | Matt Inox             |
| Cabinet Size (mm)       | 400                   |
| Bowl Dimension (mm)     | 183 x 403             |
| 2nd Bowl Dimension (mm) | N/A                   |
| Bowl Depth (mm)         | 145                   |
| Gauge Steel             | 0.9                   |
| Fitting                 | Integrated            |
| Waste Included          | Yes                   |



## NEW YORK 40X40



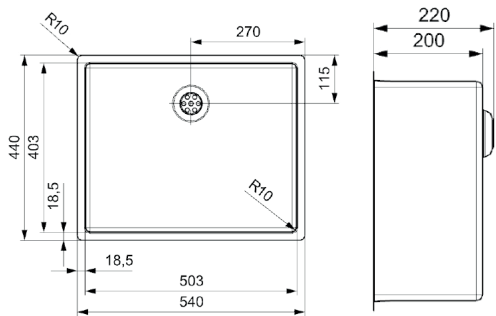
\*Integral Waste

### Features

|                         |                       |
|-------------------------|-----------------------|
| Material                | 18/10 Stainless Steel |
| Finish                  | Matt Inox             |
| Cabinet Size (mm)       | 450                   |
| Bowl Dimension (mm)     | 403 x 403             |
| 2nd Bowl Dimension (mm) | N/A                   |
| Bowl Depth (mm)         | 180                   |
| Gauge Steel             | 0.9                   |
| Fitting                 | Integrated            |
| Waste Included          | Yes                   |



# NEW YORK 50X40



\*Integral Waste

## Features

|                         |                       |
|-------------------------|-----------------------|
| Material                | 18/10 Stainless Steel |
| Finish                  | Matt Inox             |
| Cabinet Size (mm)       | 600                   |
| Bowl Dimension (mm)     | 503 x 403             |
| 2nd Bowl Dimension (mm) | N/A                   |
| Bowl Depth (mm)         | 200                   |
| Gauge Steel             | 0.9                   |
| Fitting                 | Integrated            |
| Waste Included          | Yes                   |



Semi integrated

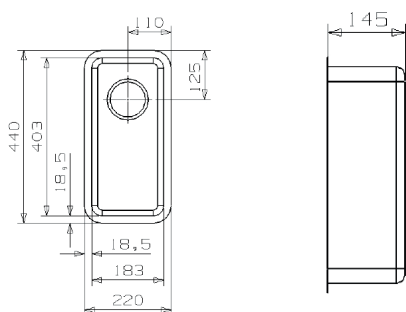
Underbuild

Integrated



# OHIO COLLECTION

## OHIO 18X40



### Features

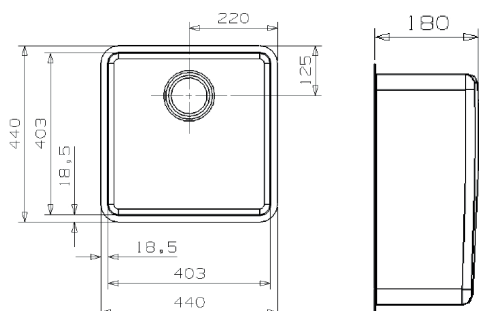
|                         |                       |
|-------------------------|-----------------------|
| Material                | 18/10 Stainless Steel |
| Finish                  | Matt Inox             |
| Cabinet Size (mm)       | 400                   |
| Bowl Dimension (mm)     | 183 x 403             |
| 2nd Bowl Dimension (mm) | N/A                   |
| Bowl Depth (mm)         | 145                   |
| Gauge Steel             | 0.9                   |
| Fitting                 | Integrated            |
| Waste Included          | Yes                   |



## OHIO 40X40



\*Also available in 50x40



### Features

|                         |                       |
|-------------------------|-----------------------|
| Material                | 18/10 Stainless Steel |
| Finish                  | Matt Inox             |
| Cabinet Size (mm)       | 450                   |
| Bowl Dimension (mm)     | 403 x 403             |
| 2nd Bowl Dimension (mm) | N/A                   |
| Bowl Depth (mm)         | 180                   |
| Gauge Steel             | 0.9                   |
| Fitting                 | Integrated            |
| Waste Included          | Yes                   |

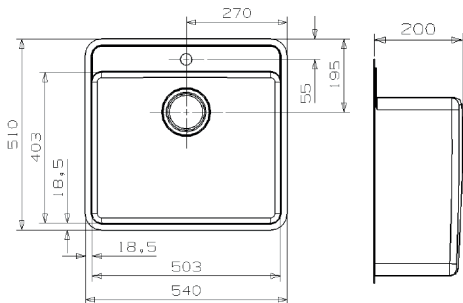




# OHIO 50X40 TAPWING



\*Also available in 40x40



## Features

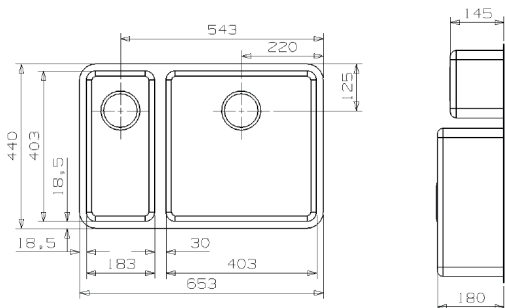
|                         |                       |
|-------------------------|-----------------------|
| Material                | 18/10 Stainless Steel |
| Finish                  | Matt Inox             |
| Cabinet Size (mm)       | 600                   |
| Bowl Dimension (mm)     | 503 x 403             |
| 2nd Bowl Dimension (mm) | N/A                   |
| Bowl Depth (mm)         | 200                   |
| Gauge Steel             | 0.9                   |
| Fitting                 | Integrated            |
| Waste Included          | Yes                   |



# OHIO 18X40+40X40

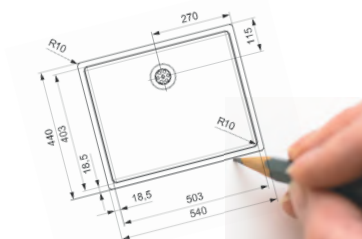


\*Also available as main bowl left



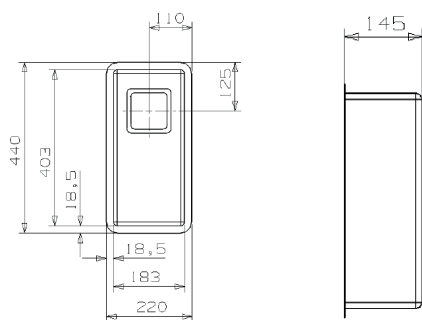
## Features

|                         |                       |
|-------------------------|-----------------------|
| Material                | 18/10 Stainless Steel |
| Finish                  | Matt Inox             |
| Cabinet Size (mm)       | 800                   |
| Bowl Dimension (mm)     | 183 x 403             |
| 2nd Bowl Dimension (mm) | 403 x 403             |
| Bowl Depth (mm)         | 145 / 180             |
| Gauge Steel             | 0.9                   |
| Fitting                 | Integrated            |
| Waste Included          | Yes                   |



# TEXAS COLLECTION

## TEXAS 18X40

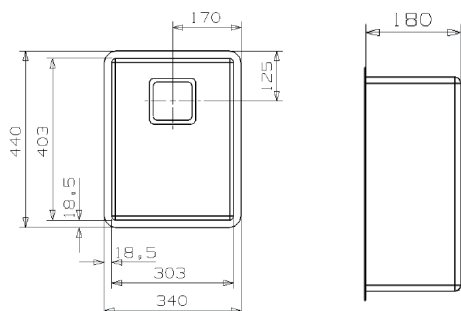


### Features

|                                |                       |
|--------------------------------|-----------------------|
| <b>Material</b>                | 18/10 Stainless Steel |
| <b>Finish</b>                  | Matt Inox             |
| <b>Cabinet Size (mm)</b>       | 400                   |
| <b>Bowl Dimension (mm)</b>     | 183 x 403             |
| <b>2nd Bowl Dimension (mm)</b> | N/A                   |
| <b>Bowl Depth (mm)</b>         | 145                   |
| <b>Gauge Steel</b>             | 0.9                   |
| <b>Fitting</b>                 | Integrated            |
| <b>Waste Included</b>          | Yes                   |



## TEXAS 30X40

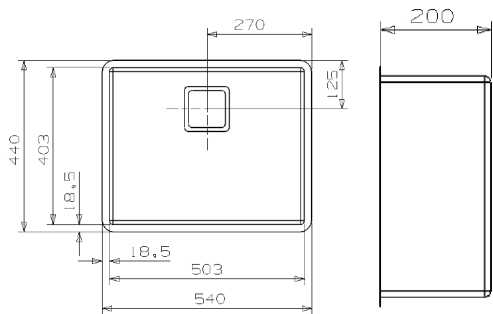


### Features

|                                |                       |
|--------------------------------|-----------------------|
| <b>Material</b>                | 18/10 Stainless Steel |
| <b>Finish</b>                  | Matt Inox             |
| <b>Cabinet Size (mm)</b>       | 400                   |
| <b>Bowl Dimension (mm)</b>     | 303 x 403             |
| <b>2nd Bowl Dimension (mm)</b> | N/A                   |
| <b>Bowl Depth (mm)</b>         | 180                   |
| <b>Gauge Steel</b>             | 0.9                   |
| <b>Fitting</b>                 | Integrated            |
| <b>Waste Included</b>          | Yes                   |



# TEXAS 50X40



## Features

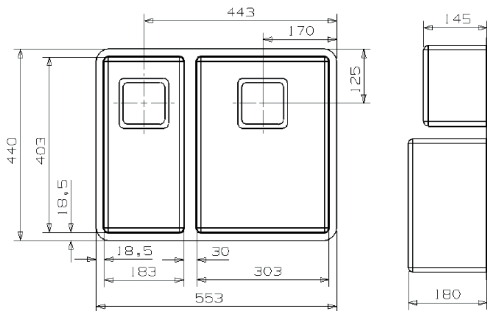
|                         |                       |
|-------------------------|-----------------------|
| Material                | 18/10 Stainless Steel |
| Finish                  | Matt Inox             |
| Cabinet Size (mm)       | 600                   |
| Bowl Dimension (mm)     | 503 x 403             |
| 2nd Bowl Dimension (mm) | N/A                   |
| Bowl Depth (mm)         | 200                   |
| Gauge Steel             | 0.9                   |
| Fitting                 | Integrated            |
| Waste Included          | Yes                   |



# TEXAS 18X40+30X40

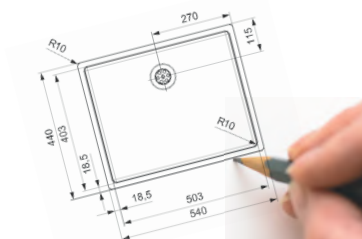


\*Also available as main bowl left



## Features

|                         |                       |
|-------------------------|-----------------------|
| Material                | 18/10 Stainless Steel |
| Finish                  | Matt Inox             |
| Cabinet Size (mm)       | 600                   |
| Bowl Dimension (mm)     | 183 x 403             |
| 2nd Bowl Dimension (mm) | 303 x 403             |
| Bowl Depth (mm)         | 145 / 180             |
| Gauge Steel             | 0.9                   |
| Fitting                 | Integrated            |
| Waste Included          | Yes                   |



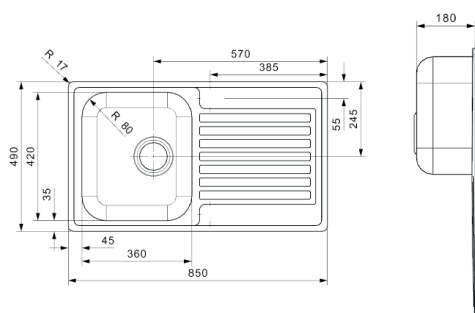


# CENTURIO COLLECTION

## CENTURIO L10



\*\* Undrilled unless requested

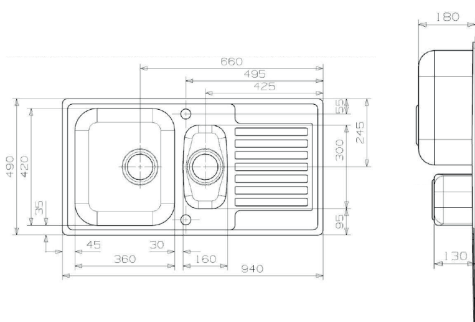


### Features

|                         |                       |
|-------------------------|-----------------------|
| Material                | 18/10 Stainless Steel |
| Finish                  | Polished Inox         |
| Cabinet Size (mm)       | 600                   |
| Bowl Dimension (mm)     | 360 x 420             |
| 2nd Bowl Dimension (mm) | N/A                   |
| Bowl Depth (mm)         | 180                   |
| Gauge Steel             | 0.9                   |
| Fitting                 | Integrated            |
| Waste Included          | Yes                   |



## CENTURIO L1.5



### Features

|                         |                       |
|-------------------------|-----------------------|
| Material                | 18/10 Stainless Steel |
| Finish                  | Polished Inox         |
| Cabinet Size (mm)       | 600                   |
| Bowl Dimension (mm)     | 360 x 420             |
| 2nd Bowl Dimension (mm) | 160 x 300             |
| Bowl Depth (mm)         | 180 / 130             |
| Gauge Steel             | 0.9                   |
| Fitting                 | Integrated            |
| Waste Included          | Yes                   |







# Granite sink collection



In 2015 Reginox created a partnership with Elleci, one of Europe's leading granite sink manufacturers. Priding itself in innovation and high quality materials, this is one of the most comprehensive granite sink top ranges in the UK. The obvious benefits to the developer is the longevity of the products appearance due to its high quality composition. Mixing colours, materials, configurations and designs allows Reginox to offer the developer market fantastic opportunities, including upgrade and accessories adding to this.

From entry level to high end, we are proud of this product and are confident you will be too.



Inset



Underbuild

## • Tekno

Page 31

## • Ego

Page 32

## • Best

Page 33

## • Quadra

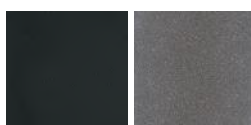
Page 34

### Colours & Finishes



Cream

White



Black

Titanium



Granitek

Made up from natural granite and acrylic resin, giving an appearance of natural stone.



Metaltek

Made up from natural granite and acrylic resin, with the addition of metallic particles gives the product a brilliant and shining finish.



Impacts resistant



Thermic shocks resistant



ANTIBACTERIAL PROTECTION



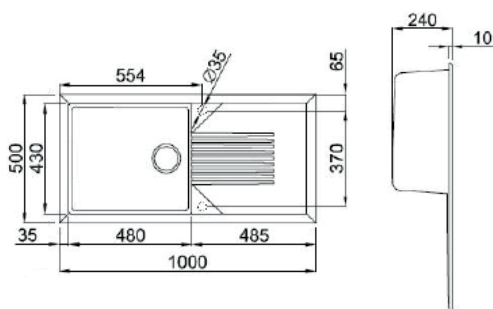
UV Protection



# Granite sink collection

## TEKNO SINKS

### TEKNO 480

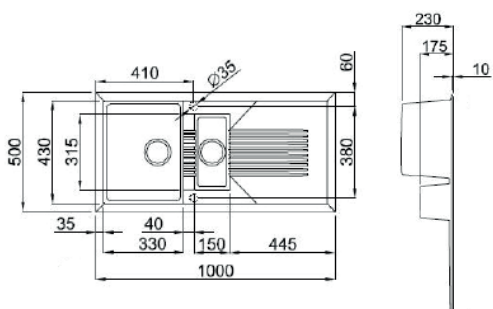


#### Features

|                         |               |
|-------------------------|---------------|
| Material                | Granite       |
| Finish                  | Granitek      |
| Colour                  | Black & White |
| Cabinet Size (mm)       | 600           |
| Bowl Dimension (mm)     | 480 x 430     |
| 2nd Bowl Dimension (mm) | N/A           |
| Bowl Depth (mm)         | 240           |
| Fitting                 | Inset         |
| Waste Included          | Yes           |

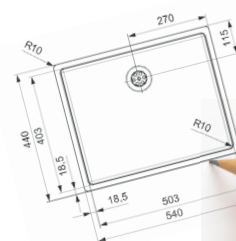


### TEKNO 475



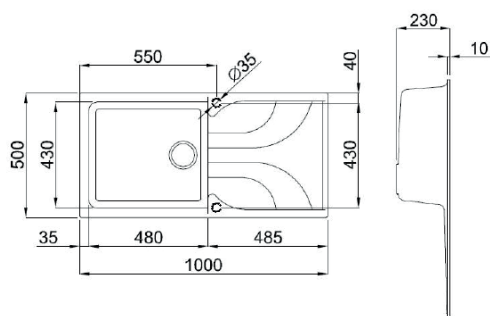
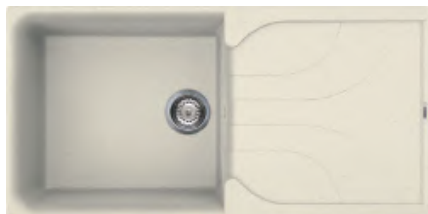
#### Features

|                         |               |
|-------------------------|---------------|
| Material                | Granite       |
| Finish                  | Granitek      |
| Colour                  | Black & White |
| Cabinet Size (mm)       | 600           |
| Bowl Dimension (mm)     | 330 x 430     |
| 2nd Bowl Dimension (mm) | 150 x 315     |
| Bowl Depth (mm)         | 230 / 175     |
| Fitting                 | Inset         |
| Waste Included          | Yes           |



# EGO

## EGO 480

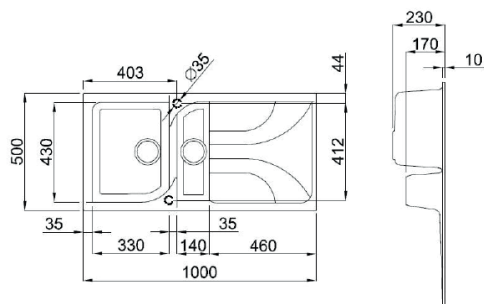


### Features

|                                |                            |
|--------------------------------|----------------------------|
| <b>Material</b>                | Granite                    |
| <b>Finish</b>                  | Granitek & Metaltek        |
| <b>Colour</b>                  | Black, White, Cream & Grey |
| <b>Cabinet Size (mm)</b>       | 600                        |
| <b>Bowl Dimension (mm)</b>     | 480 x 430                  |
| <b>2nd Bowl Dimension (mm)</b> | N/A                        |
| <b>Bowl Depth (mm)</b>         | 230                        |
| <b>Fitting</b>                 | Inset                      |
| <b>Waste Included</b>          | Yes                        |



## EGO 475



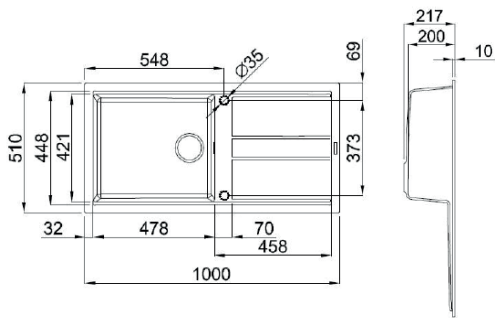
### Features

|                                |                            |
|--------------------------------|----------------------------|
| <b>Material</b>                | Granite                    |
| <b>Finish</b>                  | Granitek & Metaltek        |
| <b>Colour</b>                  | Black, White, Cream & Grey |
| <b>Cabinet Size (mm)</b>       | 600                        |
| <b>Bowl Dimension (mm)</b>     | 330 x 430                  |
| <b>2nd Bowl Dimension (mm)</b> | 140 x 430                  |
| <b>Bowl Depth (mm)</b>         | 230 / 170                  |
| <b>Fitting</b>                 | Inset                      |
| <b>Waste Included</b>          | Yes                        |



BEST

BEST 480

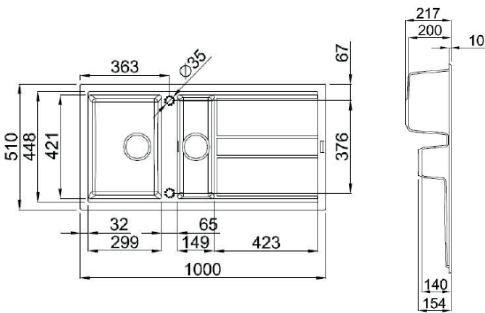


Features

|                         |                            |
|-------------------------|----------------------------|
| Material                | Granite                    |
| Finish                  | Granitek & Metaltek        |
| Colour                  | Black, White, Cream & Grey |
| Cabinet Size (mm)       | 600                        |
| Bowl Dimension (mm)     | 478 x 421                  |
| 2nd Bowl Dimension (mm) | N/A                        |
| Bowl Depth (mm)         | 200                        |
| Fitting                 | Inset                      |
| Waste Included          | Yes                        |

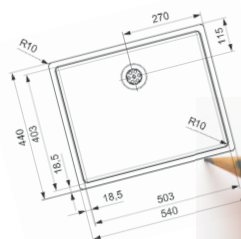


BEST 475



Features

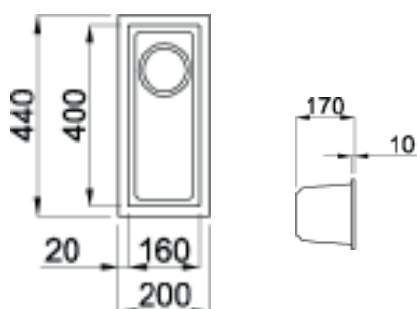
|                         |                            |
|-------------------------|----------------------------|
| Material                | Granite                    |
| Finish                  | Granitek & Metaltek        |
| Colour                  | Black, White, Cream & Grey |
| Cabinet Size (mm)       | 600                        |
| Bowl Dimension (mm)     | 299 x 421                  |
| 2nd Bowl Dimension (mm) | 149 x 421                  |
| Bowl Depth (mm)         | 200 / 140                  |
| Fitting                 | Inset                      |
| Waste Included          | Yes                        |





# QUADRA

## QUADRA 50

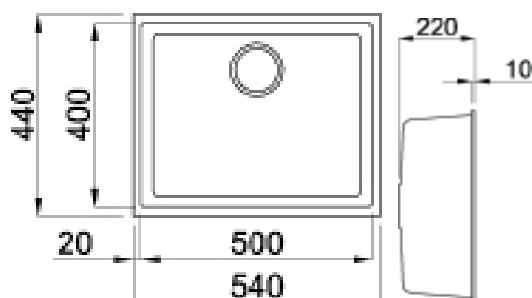


### Features

|                                |                            |
|--------------------------------|----------------------------|
| <b>Material</b>                | Granite                    |
| <b>Finish</b>                  | Granitek & Metaltek        |
| <b>Colour</b>                  | Black, White, Cream & Grey |
| <b>Cabinet Size (mm)</b>       | 300                        |
| <b>Bowl Dimension (mm)</b>     | 160 x 400                  |
| <b>2nd Bowl Dimension (mm)</b> | N/A                        |
| <b>Bowl Depth (mm)</b>         | 170                        |
| <b>Fitting</b>                 | Undermount                 |
| <b>Waste Included</b>          | Yes                        |



## QUADRA 105



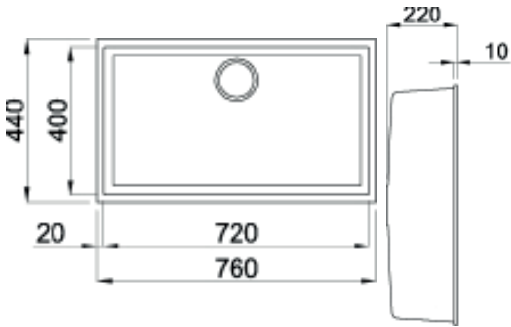
### Features

|                                |                            |
|--------------------------------|----------------------------|
| <b>Material</b>                | Granite                    |
| <b>Finish</b>                  | Granitek & Metaltek        |
| <b>Colour</b>                  | Black, White, Cream & Grey |
| <b>Cabinet Size (mm)</b>       | 600                        |
| <b>Bowl Dimension (mm)</b>     | 500 x 400                  |
| <b>2nd Bowl Dimension (mm)</b> | N/A                        |
| <b>Bowl Depth (mm)</b>         | 220                        |
| <b>Fitting</b>                 | Undermount                 |
| <b>Waste Included</b>          | Yes                        |



# QUADRA

## QUADRA 130



### Features

|                         |                            |
|-------------------------|----------------------------|
| Material                | Granite                    |
| Finish                  | Granitek & Metaltek        |
| Colour                  | Black, White, Cream & Grey |
| Cabinet Size (mm)       | 800                        |
| Bowl Dimension (mm)     | 720 x 400                  |
| 2nd Bowl Dimension (mm) | N/A                        |
| Bowl Depth (mm)         | 220                        |
| Fitting                 | Undermount                 |
| Waste Included          | Yes                        |



# Ceramic sink collection



Becoming ever more popular within the UK kitchen market, ceramic sinks by Reginox provide the perfect combination of style and practicality, no matter the kitchen design. Manufactured to the most exacting standards this collection offers 'something different' for developers. Whether an uber contemporary high end penthouse kitchen or something at the lower end of the spectrum these sinks cater for every kitchen, the sinks look equally at home in modern or traditional kitchens. All Reginox ceramic sinks come complete with high quality, an easy to install waste and fitting packs. A range of complimentary accessories are also available to create added value and upgrade opportunities.



Inset



Underbuild

- Traditional

Page 37

- Contemporary

Page 38

- Undermount

Page 39

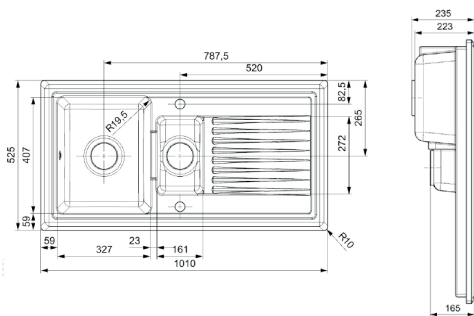
- Accessory

Page 41

# Ceramic sink collection

## TRADITIONAL SINKS

### RL301CW

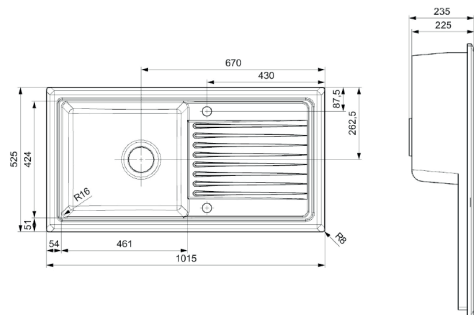


#### Features

|                         |           |
|-------------------------|-----------|
| Material                | Ceramic   |
| Finish                  | Glossy    |
| Colour                  | White     |
| Cabinet Size (mm)       | 600       |
| Bowl Dimension (mm)     | 327 x 407 |
| 2nd Bowl Dimension (mm) | 161 x 272 |
| Bowl Depth (mm)         | 223 / 165 |
| Fitting                 | Inset     |
| Waste Included          | Yes       |

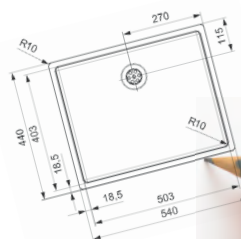


### RL304CW



#### Features

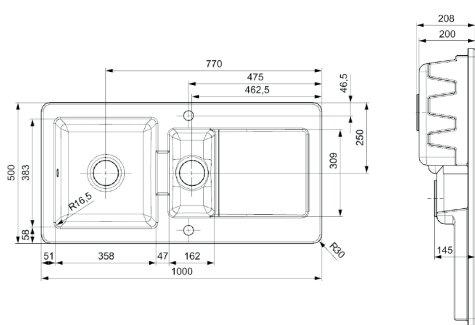
|                         |           |
|-------------------------|-----------|
| Material                | Ceramic   |
| Finish                  | Glossy    |
| Colour                  | White     |
| Cabinet Size (mm)       | 600       |
| Bowl Dimension (mm)     | 461 x 424 |
| 2nd Bowl Dimension (mm) | N/A       |
| Bowl Depth (mm)         | 225       |
| Fitting                 | Inset     |
| Waste Included          | Yes       |





# Contemporary Collection

## RL501CW

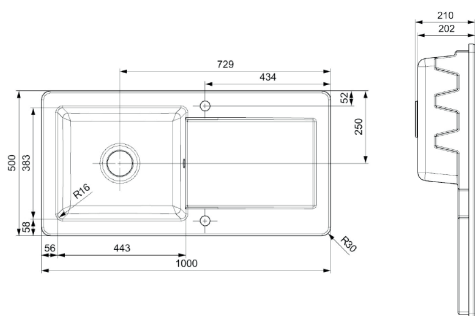


### Features

|                         |           |
|-------------------------|-----------|
| Material                | Ceramic   |
| Finish                  | Glossy    |
| Colour                  | White     |
| Cabinet Size (mm)       | 600       |
| Bowl Dimension (mm)     | 358 x 383 |
| 2nd Bowl Dimension (mm) | 162 x 309 |
| Bowl Depth (mm)         | 200 / 145 |
| Fitting                 | Inset     |
| Waste Included          | Yes       |



## RL504CW



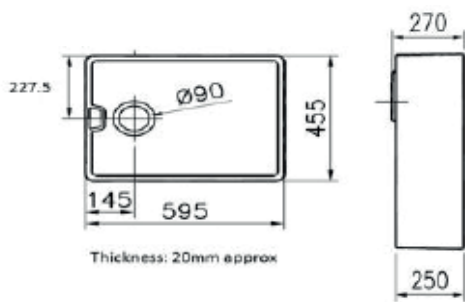
### Features

|                         |           |
|-------------------------|-----------|
| Material                | Ceramic   |
| Finish                  | Glossy    |
| Colour                  | White     |
| Cabinet Size (mm)       | 600       |
| Bowl Dimension (mm)     | 443 x 383 |
| 2nd Bowl Dimension (mm) | N/A       |
| Bowl Depth (mm)         | 202       |
| Fitting                 | Inset     |
| Waste Included          | Yes       |



# Undermount Collection

## Belfast



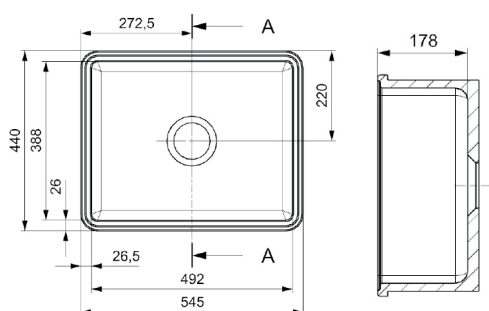
### Features

|                         |            |
|-------------------------|------------|
| Material                | Ceramic    |
| Finish                  | Glossy     |
| Colour                  | White      |
| Cabinet Size (mm)       | 600        |
| Bowl Dimension (mm)     | 595 x 455  |
| 2nd Bowl Dimension (mm) | N/A        |
| Bowl Depth (mm)         | 250        |
| Fitting                 | Undermount |
| Waste Included          | Yes        |



# Undermount Collection

## Mataro



### Features

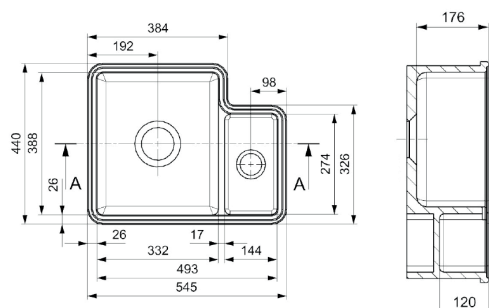
|                         |            |
|-------------------------|------------|
| Material                | Ceramic    |
| Finish                  | Glossy     |
| Colour                  | White      |
| Cabinet Size (mm)       | 600        |
| Bowl Dimension (mm)     | 492 x 388  |
| 2nd Bowl Dimension (mm) | N/A        |
| Bowl Depth (mm)         | 178        |
| Fitting                 | Undermount |
| Waste Included          | Yes        |



## TUSCANY



\*\* Main bowl left only



### Features

|                         |            |
|-------------------------|------------|
| Material                | Ceramic    |
| Finish                  | Glossy     |
| Colour                  | White      |
| Cabinet Size (mm)       | 600        |
| Bowl Dimension (mm)     | 332 x 388  |
| 2nd Bowl Dimension (mm) | 144 x 274  |
| Bowl Depth (mm)         | 176 / 120  |
| Fitting                 | Undermount |
| Waste Included          | Yes        |



## Accessory available

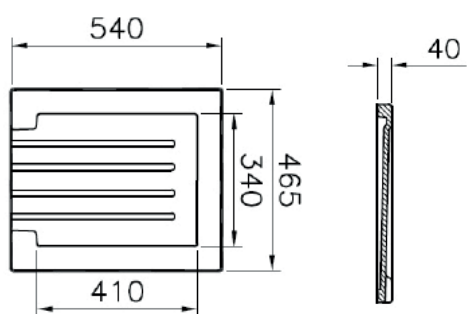
### Ceramic Drainer



#### Features

|                |                |
|----------------|----------------|
| Material       | Ceramic        |
| Finish         | Glossy         |
| Colour         | White          |
| Dimension (mm) | 540 x 465 x 40 |

Suitable for Belfast, Mataro and Tuscany sinks.





# Tap collection

Reginox taps have been designed to complement our sink collection. All made for Reginox by some of the UK's most established tap manufacturers, branded Reginox and most carrying WRAS approval they are the obvious choice to help create a perfect look for the sink and tap combination. With designs to create synergy in shape Reginox taps will be the perfect addition to your specification, backed up with fantastic after sales support, the Reginox tap collection is the obvious developer choice.



## MIAMI

**WRAS**  
APPROVED  
PRODUCT



|                    |        |
|--------------------|--------|
| Finish             | Chrome |
| Height (mm)        | 128    |
| Reach (mm)         | 195    |
| Base Diameter (mm) | 52     |
| Min Pressure (bar) | 0.2    |
| Max Pressure (bar) | 6.0    |

## ZAMBESI

**WRAS**  
APPROVED  
PRODUCT



|                    |        |
|--------------------|--------|
| Finish             | Chrome |
| Height (mm)        | 130    |
| Reach (mm)         | 235    |
| Base Diameter (mm) | 50     |
| Min Pressure (bar) | 0.2    |
| Max Pressure (bar) | 6.0    |

## ASTORIA

**WRAS**  
APPROVED  
PRODUCT



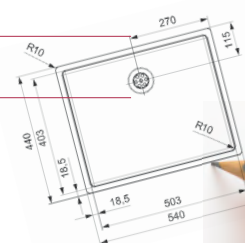
|                    |        |
|--------------------|--------|
| Finish             | Chrome |
| Height (mm)        | 319    |
| Reach (mm)         | 202    |
| Base Diameter (mm) | 50     |
| Min Pressure (bar) | 0.4    |
| Max Pressure (bar) | 5.0    |

## ASTORIA BRUSHED

**WRAS**  
APPROVED  
PRODUCT



|                    |                |
|--------------------|----------------|
| Finish             | Brushed Nickel |
| Height (mm)        | 319            |
| Reach (mm)         | 202            |
| Base Diameter (mm) | 50             |
| Min Pressure (bar) | 0.4            |
| Max Pressure (bar) | 5.0            |



## AMUR

**WRAS**  
APPROVED  
PRODUCT



|                    |        |
|--------------------|--------|
| Finish             | Chrome |
| Height (mm)        | 341    |
| Reach (mm)         | 158    |
| Base Diameter (mm) | 50     |
| Min Pressure (bar) | 0.2    |
| Max Pressure (bar) | 5.0    |

## AMUR BRUSHED

**WRAS**  
APPROVED  
PRODUCT



|                    |                |
|--------------------|----------------|
| Finish             | Brushed Nickel |
| Height (mm)        | 341            |
| Reach (mm)         | 158            |
| Base Diameter (mm) | 50             |
| Min Pressure (bar) | 0.2            |
| Max Pressure (bar) | 5.0            |

## HUDSON

**WRAS**  
APPROVED  
PRODUCT



|                    |        |
|--------------------|--------|
| Finish             | Chrome |
| Height (mm)        | 289    |
| Reach (mm)         | 205    |
| Base Diameter (mm) | 55     |
| Min Pressure (bar) | 0.5    |
| Max Pressure (bar) | 6.0    |

## HUDSON BRUSHED

**WRAS**  
APPROVED  
PRODUCT



|                    |                |
|--------------------|----------------|
| Finish             | Brushed Nickel |
| Height (mm)        | 289            |
| Reach (mm)         | 205            |
| Base Diameter (mm) | 55             |
| Min Pressure (bar) | 0.5            |
| Max Pressure (bar) | 6.0            |

## MURRAY



|                    |        |
|--------------------|--------|
| Finish             | Chrome |
| Height (mm)        | 225    |
| Reach (mm)         | 222    |
| Base Diameter (mm) | 48     |
| Min Pressure (bar) | 0.2    |
| Max Pressure (bar) | 5.0    |

## MAGDALENA



|                    |        |
|--------------------|--------|
| Finish             | Chrome |
| Height (mm)        | 360    |
| Reach (mm)         | 200    |
| Base Diameter (mm) | 50     |
| Min Pressure (bar) | 0.4    |
| Max Pressure (bar) | 5.0    |

## CAMAYA



|                    |        |
|--------------------|--------|
| Finish             | Chrome |
| Height (mm)        | 400    |
| Reach (mm)         | 280    |
| Base Diameter (mm) | 52     |
| Min Pressure (bar) | 0.5    |
| Max Pressure (bar) | 5.0    |

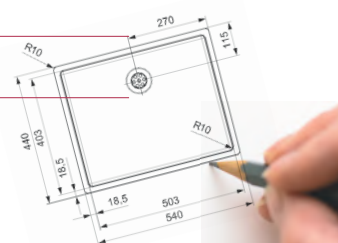
## AMANZI



\*3 in 1 Hot tap

|                    |        |
|--------------------|--------|
| Finish             | Chrome |
| Height (mm)        | 343    |
| Reach (mm)         | 210    |
| Base Diameter (mm) | 52     |
| Min Pressure (bar) | 1.0    |
| Max Pressure (bar) | 3.0    |

\*\* Check with Reginox UK for WRAS information





## Product Information

Mounting can be either undermount, integrated, semi-integrated or inset. The integrated or undermount options provide stunning results when fitted in solid surfaces. Whilst using an integrated sink as an inset also provides a different look. Whichever way you choose to fit your product you will be rewarded with a stunning and visually stimulating end result that will enhance your worktop and kitchen.

### Integrated Sinks

For those customers choosing integrated sinks the flexible fitting system provides different opportunities to install your product.



Underbuild



Integrated



Semi integrated

### Inset sinks

Reginox sinks are easy to install and provide the customer with a superb finish with stylish detail to the top edges.

Fitting couldn't be easier, it's simply about making a cut-out in your worktop and mounting the sink with the clips provided. All sinks come with clear instructions but checking cut out measurements before proceeding is recommended.

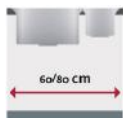


Inset

### Cabinet Size

The choice of your sink depends on the cabinet as this determines the available space. There are several cabinet sizes, 40cm, 45cm, 50cm, 60cm, 80cm, 90cm & 100cm.

You only need to take into account the size of the bowl, not the drainer.



### Technical Information

Reginox does have clear technical diagrams of all integrated sinks and custom made milling templates can be supplied. For computer controlled milling machines the necessary software is available on CD or via the website.

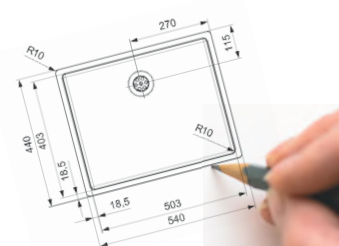
All our sinks are delivered with the full waste kit.

### Tips for Maintenance

- To maintain your Reginox sink unit, we recommend that you use Reginox Inox Care regularly. Rub it in gently once a week and your sink will stay as good as new.
- Clean water is enough for daily maintenance with the addition of mild detergent.
- You should polish only in the direction of the finish when using a scourer.



## Built-in options, use and maintenance





## EC Declaration of Conformity

The manufacturer

Reginox bv  
Noordermorssingel 2  
7461 JN Rijssen

declares in accordance with paragraph 1.4 of the Buildings Decree  
(translation of the Building Products Directive 89/106/EEC) that

### Reginox stainless steel sinks

manufactured at its plant in Rijssen

comply with the stipulations as specified in NEN-EN 13310  
Kitchen sinks – functional requirements and test methods

The stainless steel sinks in question are intended for household use.

Rijssen: 27-05-2009

  
Technical Director  
W. ter Steege



## CERTIFICATE OF APPROVAL

This is to certify that the Quality Management System of:

**Reginox B.V.**  
**Noordermorssingel 2**  
**7461 JN Rijssen**  
**The Netherlands**

has been approved by Lloyd's Register Quality Assurance  
to the following Quality Management System Standard:

**ISO 9001 : 2008**

The Quality Management System is applicable to:

**The production and the designs of stainless steel sinks and  
stainless steel worktops. The production of synthetic  
worktops and synthetic desks. The supply of synthetic  
worktops, granite sinks and accessories.**

Approval Certificate No:  
RQA650960

Original Approval : 1 July 1996

Current Certificate : 1 July 2017

Certificate Expiry , 14 september 2018

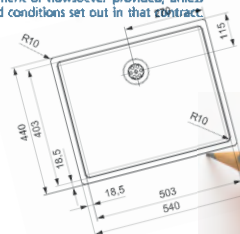
Issued by Lloyd's Register Nederland B.V.



K.P. van der Mandelelaan 41a, 3062 MB Rotterdam, Nederland

This approval is carried out in accordance with the LRQA assessment and certification procedures and monitored by LRQA.

Lloyd's Register Group Limited, its affiliates and subsidiaries, including Lloyd's Register Quality Assurance Limited (LRQA), and their respective officers, employees or agents are, individually and collectively, referred to in this clause as 'Lloyd's Register'. Lloyd's Register assumes no responsibility and shall not be liable to any person for any loss, damage or expense caused by reliance on the information or advice in this document or howsoever provided, unless that person has signed a contract with the relevant Lloyd's Register entity for the provision of this information or advice and in that case any responsibility or liability is exclusively on the terms and conditions set out in that contract.





# Delivery and warranty provisions for Reginox

## - Stainless steel products

All Reginox sinks are supplied with a lifetime warranty! This warranty doesn't cover waste kits, pop-ups, connections, strainers, and kitchen accessories. Within the first 6 months of the warranty period, travelling time and call-out charges for servicing, insofar as these relate to resolving complaints under these warranty provisions, and the costs of sending parts, will not be invoiced.

1. Demonstrable defects in material and workmanship are entirely covered by this warranty, provided that they are notified to us within the stated time limit. The solution is at our discretion: either by repair or replacement.
2. Damage caused by overheating of electrical or gas equipment, water leaks, fumes, scratches, etc. as well as normal wear and tear are not covered by this warranty.
3. Stains, deposits, etc. which are the consequence of using corrosive substances such as soldering fluid, paint/stripper/brush cleaners, metal grindings, cement, sink unblockers, silver polish, developing and fixing substances, etc. are not covered by this warranty.
4. Sheeting subsequently modified by third parties, by creating cooking hob cut-outs, tap holes etc. are not covered under warranty.
5. A claim under warranty does not extend claims for extension of the warranty period or for newly delivered parts of the repairs that are carried out.
6. All replaced parts or old steel sheeting which has been replaced are the property of Reginox and therefore invoiced and only credited after return.
7. Claims under warranty and subsequent entitlement to repairs or replacement will only be dealt with if the complaint has first been personally investigated and reported by the buyer. No other claims or rights of any kind whatsoever shall ever be derived from this warranty.
8. All goods must be checked prior to assembly and/or installation to make sure that they have been manufactured correctly, e.g. dimensions and cut-outs, and to make sure that they are not damaged.
9. Only invoices from buyers deriving from complaints etc. will be honoured, providing that there has been express prior consultation on the matter and agreement has been reached (set down content of agreement in writing).
10. When Reginox products are delivered, the recipient must check that the packaging is not damaged immediately (within 48 hours) dents, scratches, etc. and if necessary, this must be stated on the delivery note.
11. Our confirmations also serve as work orders for our production. It is therefore essential to check these because if there is no quick response, it will no longer be possible to accept any claim on the grounds of incorrect manufacturer.
12. In addition to these provisions, the General Terms and Conditions of Delivery and Payment for the Metal Industry issued by the Koninklijke Metaalunie, filed with the Registry of Rotterdam District Court on 1 January 2008, shall apply.

For more terms and conditions please visit [www.reginox.co.uk](http://www.reginox.co.uk) or call Reginox UK on 01260 280033





THE DEVELOPERS CHOICE

*'IT'S WHAT WE DO!'*

[www.reginox.co.uk](http://www.reginox.co.uk)

Reginox UK Ltd  
Units 1-4 Radnor Park Trading Estate  
Back Lane, Congleton  
Cheshire, CW12 4XJ  
+44 (0)1260 280033  
[sales@reginox.co.uk](mailto:sales@reginox.co.uk)